

Day 2 : Refuge Papa - Refuge Lancia (for path CAI 120)

RIFUGIO GEN.
ACHILLE PAPA



INFORMAZIONI PERCORSO

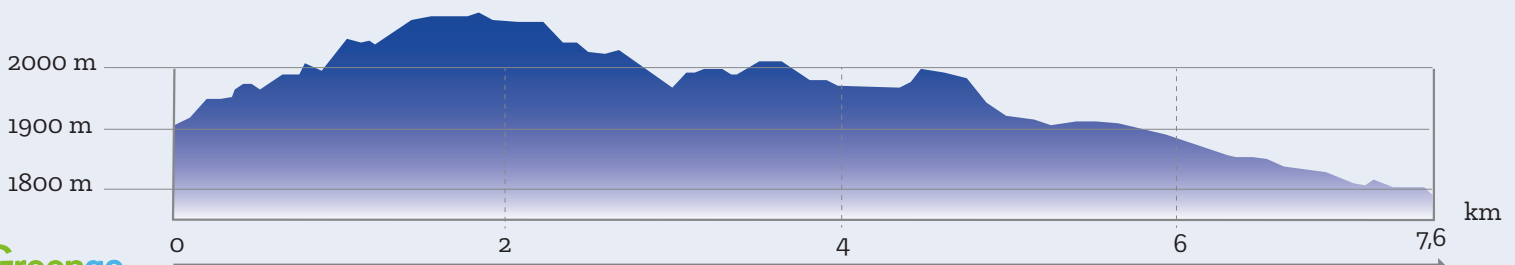
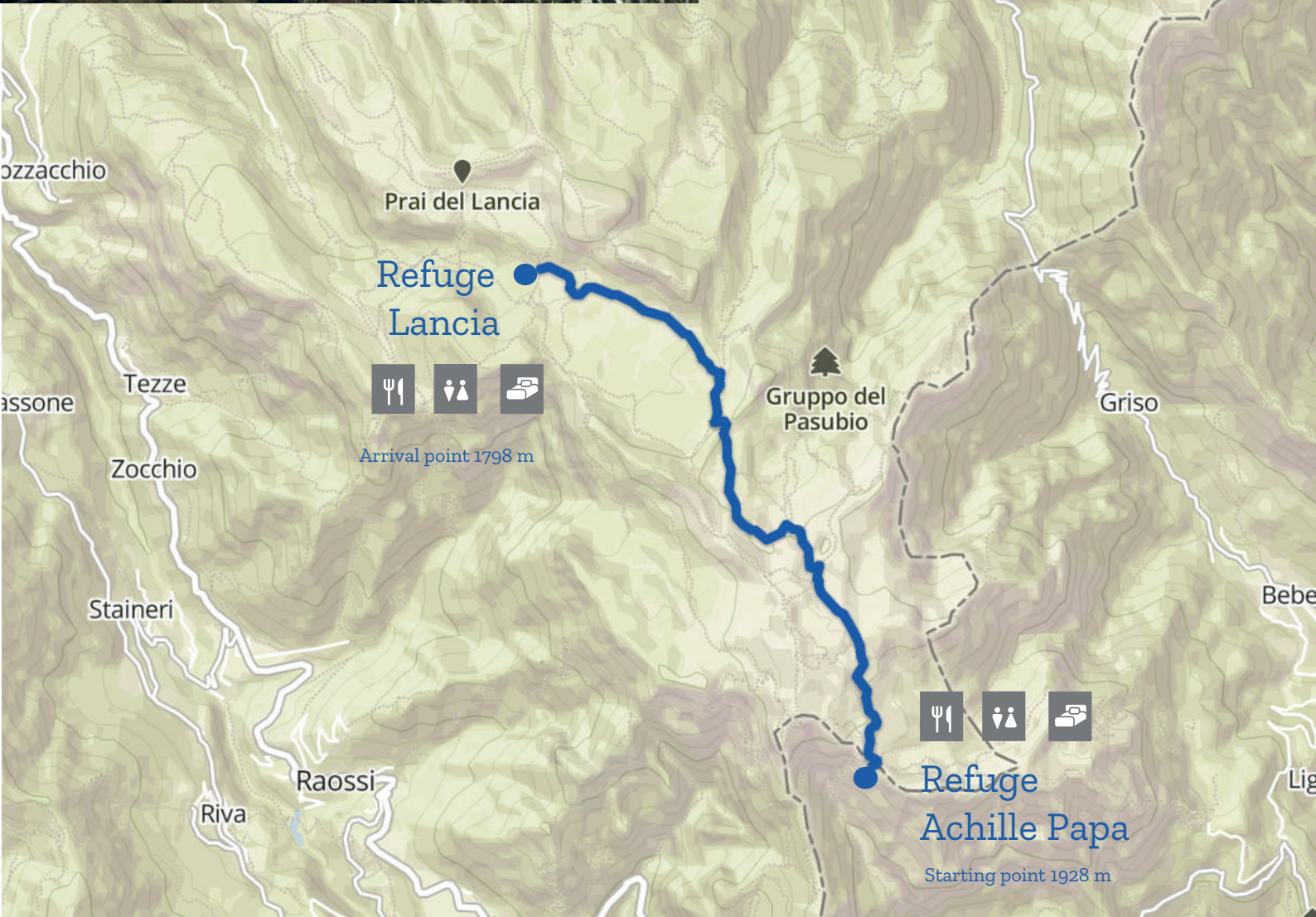
Distance: 7,6 km

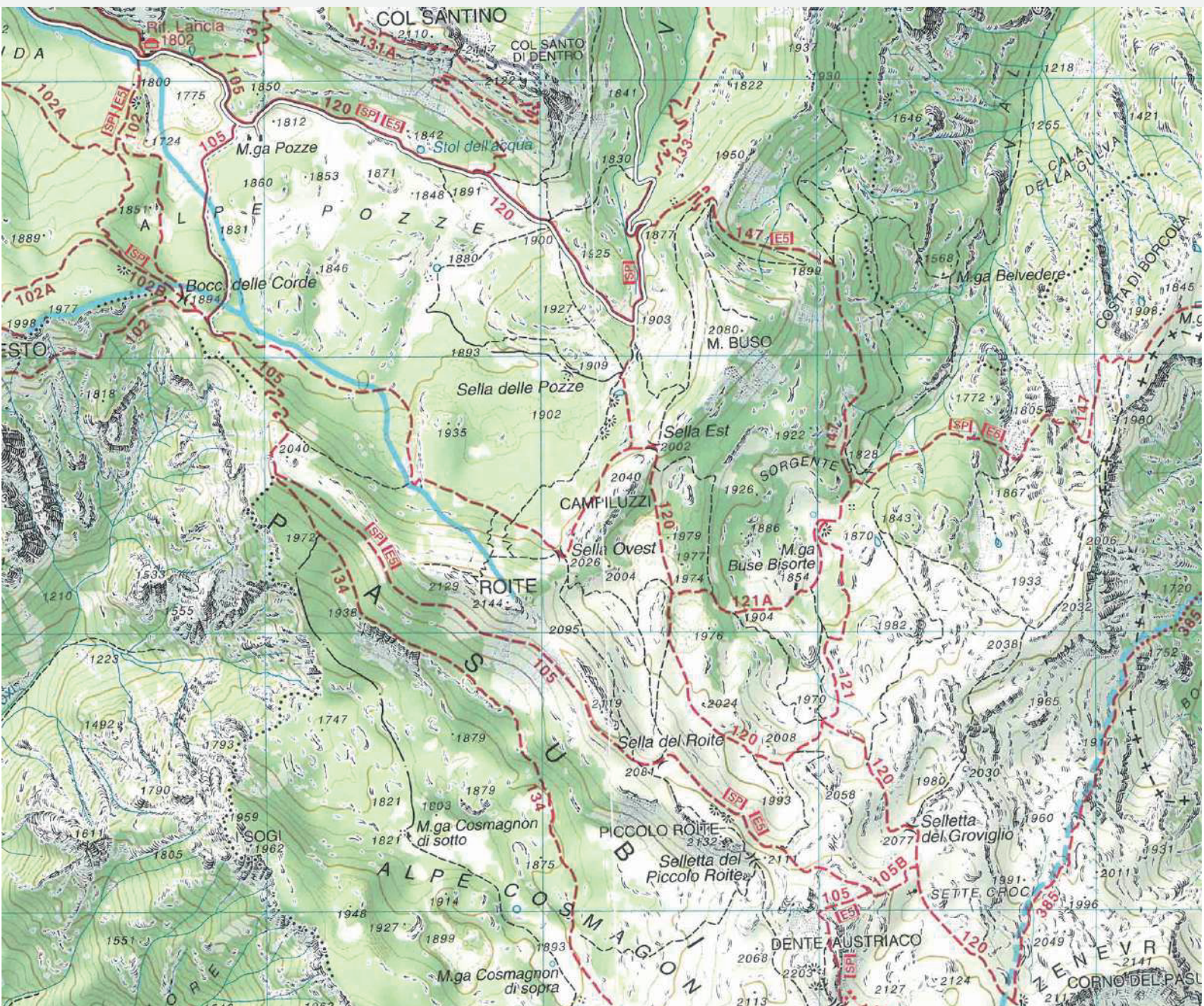
Altitude difference: 226 uphill

Duration: 3 h

Difficulty: hiking **E**

The map you are using is not technical. The track of the paths is only indicative. For a detailed description of the paths we recommend you consult the official maps.





INDICAZIONI

- Mule track or wide and easy trail with signposts
- Path with trail sign
- Isolated hotel
- Secondary asphalted road
- Secondary unpaved road
- State and regional border



TIPS FOR
THE HIKE

